

Configure System Protection

Windows 10 sometimes encounters problems that result in you being unable to start or boot your computer. While Windows 10 has many troubleshooting tools and recovery options, one very important recovery option is either turned off by default or not configured properly. Making sure System Protection is configured properly will result in you having a better chance of recovering more easily from a computer startup failure.

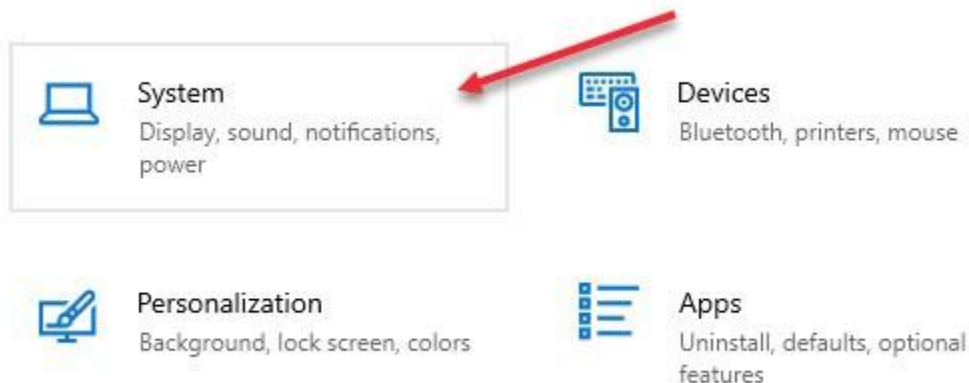
1. Click the Start button in the lower left corner of your screen.



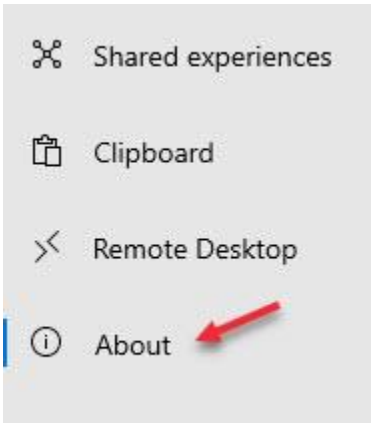
2. Click the Settings gear wheel on the Start Screen.



3. Click System.



4. Click About at the bottom of the menu on the left side.



5. Scroll down and click System info...

Related settings

[BitLocker settings](#)

[System info](#)

or find it near the top right side of the window



Related settings

[BitLocker settings](#)

[System info](#)

6. Click System protection.

- Device Manager
- Remote settings
- System protection
- Advanced system settings

7. Click Configure.

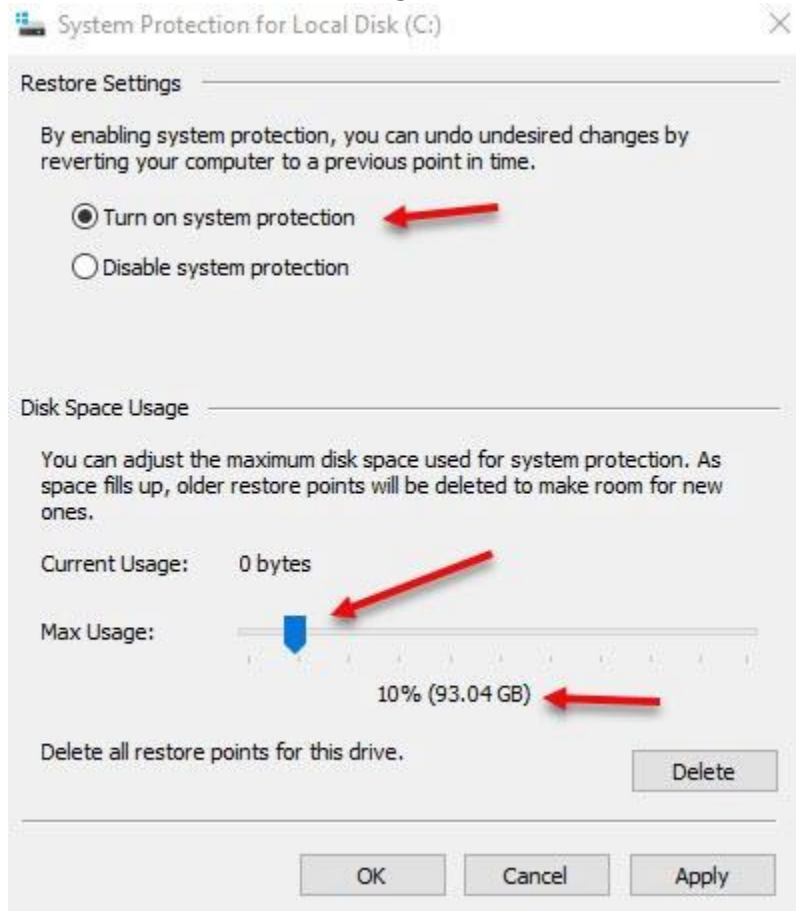
Protection Settings

Available Drives	Protection
Local Disk (C:) (System)	On
Local Disk (F:)	Off
FileHistory (H:)	Off

Configure restore settings, manage disk space, and delete restore points.

Configure...

8. Click the Turn on system protection button if it's not already on. Click and slide the Max Usage button until it shows 10%.



9. Click OK to close the window.
10. Click OK to close the window.
11. Close the remaining windows by clicking the X in the top right corner of the window.